

Precautions:

- 1: Due to printing reasons, there may be some differences between the product color and the actual product. Please refer to the actual product for accuracy.
- 2: Our company reserves the right to modify and improve the appearance of our products. Please refer to the actual product without prior notice.
- 3: All product images in this brochure belong to our company.

未必品牌策划 186 6656 3739



丽朝  
ITALIAN STYLE HIGH-END  
ALUMINUM WOODEN DOOR

极窄  
纯粹  
美学

A VERY NARROW  
PURE  
AESTHETIC

Precautions:

- 1: Due to printing reasons, there may be some differences between the product color and the actual product. Please refer to the actual product for accuracy.
- 2: Our company reserves the right to modify and improve the appearance of our products. Please refer to the actual product without prior notice.
- 3: All product images in this brochure belong to our company.

MAX. 

Extremely narrow  
Beyond the boundaries of vision

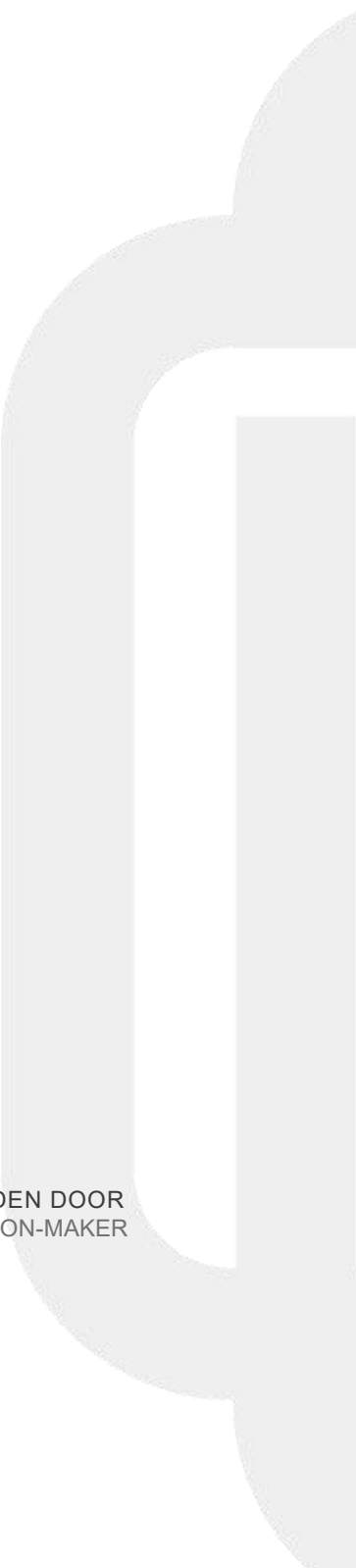
START A QUALITY NEW LIFE >>

极窄  
纯粹  
美学

A VERY NARROW  
PURE  
AESTHETIC



LI CHAO HIGH-END ALUMINUM WOODEN DOOR  
FASHION-MAKER





#### EXPLORING N POSSIBILITIES IN SPACE

---

Lichao is a professional manufacturer that integrates the research and development, production, sales, installation, and service of high-end aluminum wooden doors and minimalist doors. Up to now, the company has gone through more than ten years of development. With strong brand advantages, a perfect marketing system, leading innovative design, and rigorous professional concepts, we strive to provide every user who wants to achieve their dream of living in peace with the most satisfactory brand of aluminum wooden door products. We persist and pursue our mission tirelessly.

The company has won unanimous recognition from consumers with its unique and distinctive brand image and high-quality products. Adopting high-quality environmentally friendly and energy-saving new materials, the product style is natural and environmentally friendly, combining fashion and trend. Exquisite product craftsmanship, hardware accessories are all from well-known domestic and foreign brands, meeting personalized high requirements, with a people-oriented design concept, featuring a Western novel style, fashionable and noble; Advocate for a natural, peaceful, and comfortable Nordic lifestyle.

Interpreting a low-key and minimalist lifestyle experience, committed to creating a fashionable, safe, and healthy living space for the public. We will continue to uphold our reputation, based on the concept of innovation, with the business philosophy of quality first, customer first, and service first. We will pay attention to practical results and create a brand.

Perfectly integrate aesthetics with simplicity. Seeking a balance between functionality and aesthetics, boldly innovating in design concepts, perfectly presenting craftsmanship details, simplicity without loss of luxury, leaving behind pure masterpieces. Look around the world and explore spatial aesthetics from every home. Seeking a simple way that originates from life and transcends it.

# READING INDEX

#### ECO-GATE SERIES

---

- 01-14 | Invisible Door Series
- 15-18 | Wall panel series
- 19-26 | 45 System 9mm Aluminum Wooden Door Series
- 27-34 | 45 System Outer Flat Inner Open Aluminum Wooden Door Series
- 35-42 | 45 System Magnetic Silent Aluminum Wooden Door Series
- 43-50 | 50 System External Flat Internal Opening 9mm Aluminum Wooden Door Series
- 51-56 | 50 New System External Flat and External Opening 9mm Aluminum Wooden Door Series
- 57-62 | 50 System Magnetic Aluminum Wooden Door Series
- 63-68 | 57 System Outer Flat Inner Open Aluminum Wooden Door Series
- 69-70 | Aluminum wooden door color board/accessories

#### MINIMALIST DOOR SERIES

---

- 71-74 | Perfect System Hanging Door System
- 75-82 | Hanging door system
- 83-88 | Sliding door system
- 93-106 | Flat door system
- 107-108 | Skirting Line Series
- 109-110 | Glass style/matching hardware display

# SAME COLOR MAGNETIC SILENT LOCK FOR THE ENTIRE SERIES

The soft and smooth line diagram of the lock is designed ergonomically.  
Lightweight and delicate grip, never sagging, aesthetically pleasing fit, sturdy structure



BREAKING THROUGH TRADITION AND USING NEW MATERIALS

SATISFY DIVERSIFIED DOOR CORE FILLING MATERIALS  
GRAPHENE/ALUMINUM HONEYCOMB CAN BE COMBINED IN ANY COMBINATION.

The soft and smooth line diagram of the lock is designed ergonomically,  
Lightweight and delicate grip, never sagging, aesthetically pleasing fit, sturdy structure



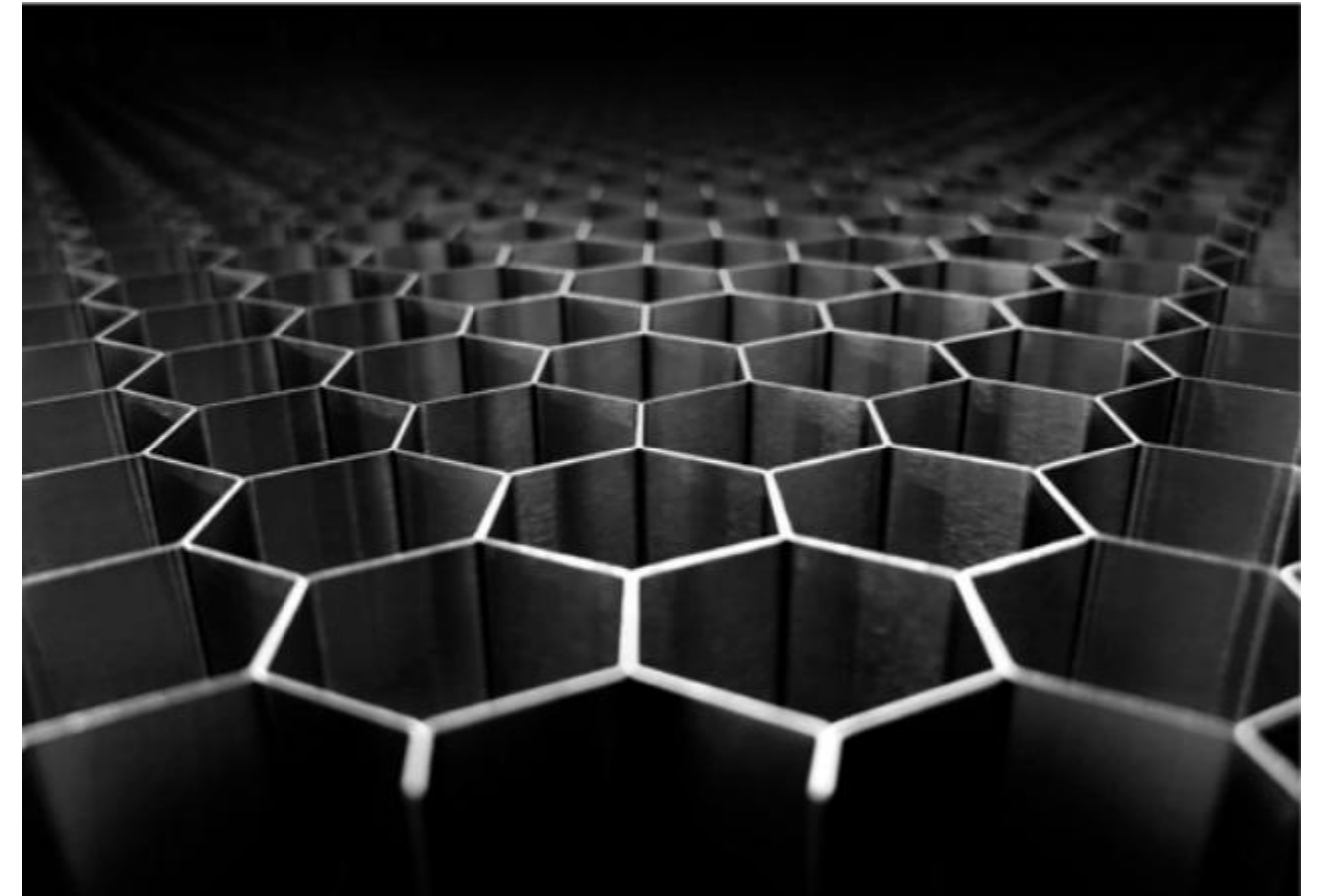
## NEW GRAPHENE HOMOGENEOUS PLATE SUBVERTING TRADITION

Subverting the traditional  
'graphene homogeneous plate'

Graphene homogeneous board refers to a board made of graphene, which is based on traditional aluminum wood doors, Embedding graphene into the door core board, Create a new type of door material. This structure provides a comprehensive improvement in the performance of the door.

The unique advantages of  
graphene structure

Graphene has high strength and hardness, as well as a certain degree of toughness, It can prevent wooden doors from cracking or deforming under stress. And it has high plasticity, advantages such as moisture resistance, fire resistance, insulation, sound insulation, and deformation resistance



## Aluminum honeycomb door core process Structural stability

Minimalist integrated design, sturdy, stable, and durable

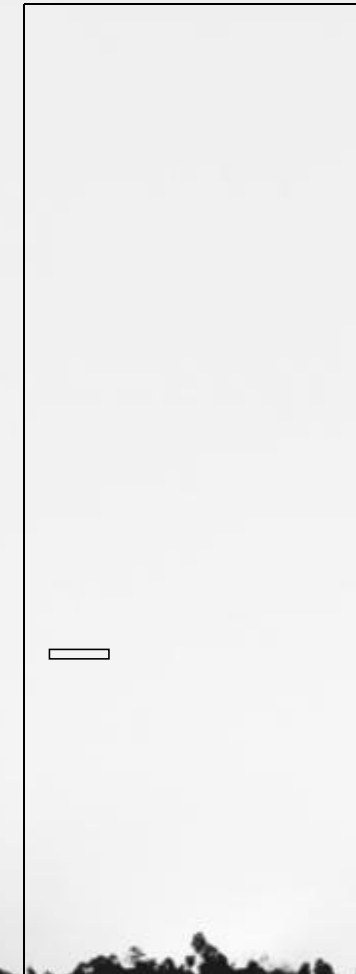
Aluminum wooden door products have unique advantages in quality, mainly reflected in the selection of hardware structure and materials.

In terms of structural materials, the door frame and door leaf edge sealing are made of high-tech aluminum magnesium titanium alloy materials, and the surface is treated with anodizing, which has a certain hardness to ensure quality in terms of wear resistance, pressure resistance, deformation resistance, and fading resistance.

The internal core of the aluminum wooden door is made of aluminum keel and aluminum honeycomb, which is moisture-proof and deformation proof. The effect of aluminum honeycomb door core on the entire door is significant.

# ECOPHYLA SERIES

Use design to interpret the perception of life, pay attention to the grasp of space design sense  
It interprets the design aesthetics full of the concept of collection.



INVISIBLE DOOR

# 3mm SERIES

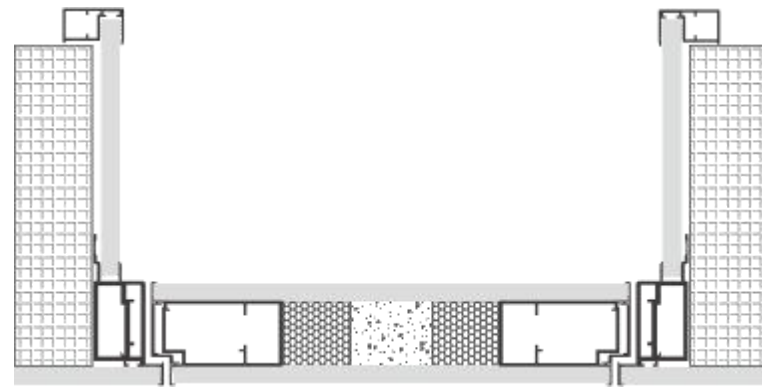


— INVISIBLE DOOR SERIES

Frame material: Dark skin  
Matching: Pure White+Mis Lock

INVISIBLE DOOR

Model | Invisible Door Series



Product parameters

Door leaf thickness | 57mm  
Panel thickness | 5/9mm  
Front width of border | 3mm

Hardware accessories

Lock | Magnetic lock  
Core | Aluminum honeycomb  
Hinges | Mis 3D hinges, zinc alloy hinges

Frame color | Skin black, moonlight gray, white

Panel material | 9mm particle board

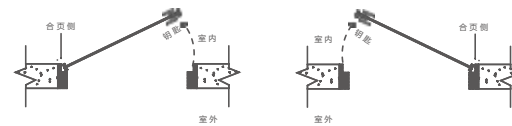
Panel color | Available in full color

Door frame style | 57 integrated main frame/keel+cover plate

Door leaf size | Height size  $1800 \leq H \leq 3000\text{mm}$ , width size  $800 \leq W \leq 1200\text{mm}$

Wall thickness | Integrated door frame within 200mm, wall thickness >200mm with connecting plate

Opening Direction | Schematic Diagram of Opening Direction



Left inner opening

Right inner opening

Door frame color | optional color card



Dark skin

Moonlight Grey

white



— INVISIBLE DOOR SERIES

Frame material: Dark skin  
Matching: Skin Feeling Noble+Mislock

Frame material: Dark skin  
Matching: Zero degree oak+Mislock



Adopting 3D hinges for super strong load-bearing capacity

90 ° precise positioning, hidden without trace, natural and smooth

## PLUS



Details (hinges)

Adopting German imported 3D hinges, hidden without trace, unique, durable and wear-resistant, the eternal choice of quality, with tens of thousands of opening and closing tests, no shaking, no deformation, beautiful, stable and safe



Details (handle)

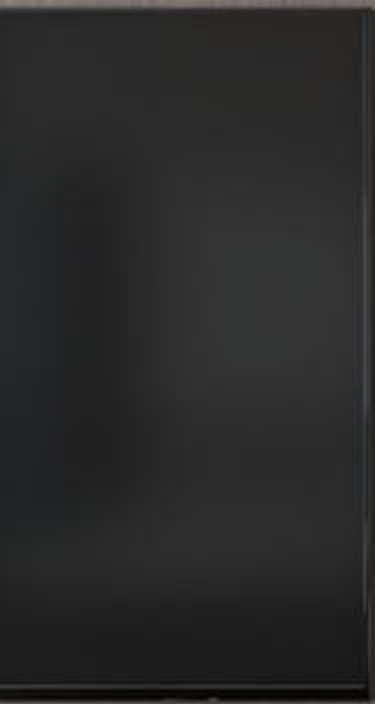
The soft and smooth line diagram of the handle is designed ergonomically, with a light and delicate grip. The flat door lock uses the award-winning red dot design product "Mis Lock", which never droops, fits beautifully, and has a sturdy structure



— PAINT DOOR SERIES

Frame material: Dark skin  
Supporting: White latex paint+Mislock

# 3mm SERIES



— PAINT DOOR SERIES

Frame material: Dark skin  
Supporting: Graphite Grey+Mis Lock

INVISIBLE DOOR

Model | Invisible Door (Batch Gray) Series



Product parameters

Door leaf thickness | 57mm  
Panel thickness | 5/9mm  
Front width of border | 1mm

Hardware accessories

Lock | Magnetic lock  
Core | Aluminum honeycomb  
Hinges | 3D hinge

Frame color | Skin black, moonlight gray, white

Panel material | 9mm particle board

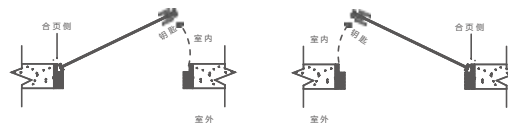
Panel color | Available in full color

Door frame style | 50 integrated main frame/keel+cover plate

Door leaf size | Height size  $1800 \leq H \leq 3000\text{mm}$ , width size  $800 \leq W \leq 1200\text{mm}$

Wall thickness | Integrated door frame within 200mm, wall thickness >200mm with connecting plate

Opening Direction | Schematic Diagram of Opening Direction



Left inner opening

Right inner opening

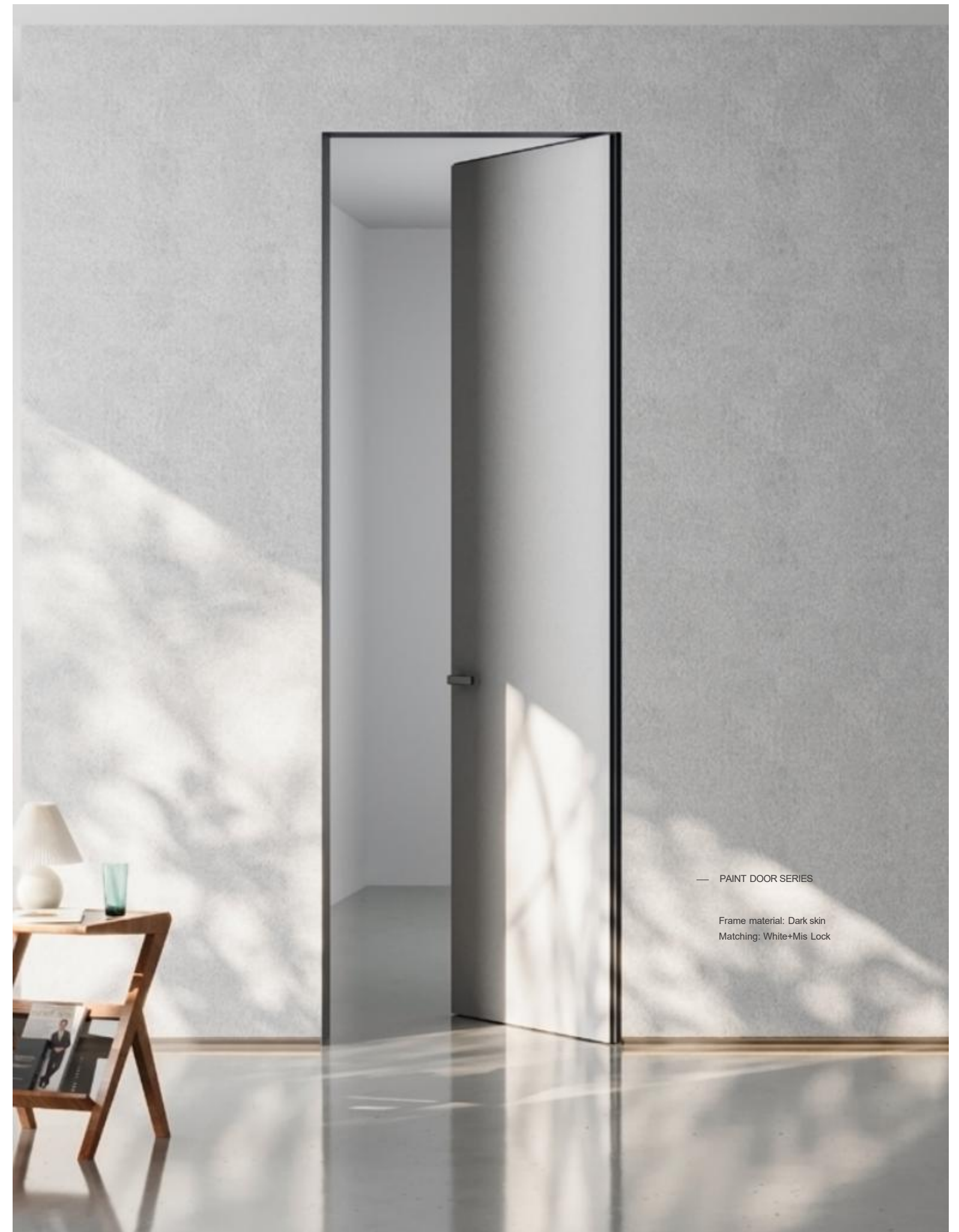
Door frame color | optional color card



Dark skin

Moonlight Grey

white



— PAINT DOOR SERIES

Frame material: Dark skin  
Matching: White+Mis Lock

护墙板系列

WALL PANEL SERIES

# 0mm SERIES



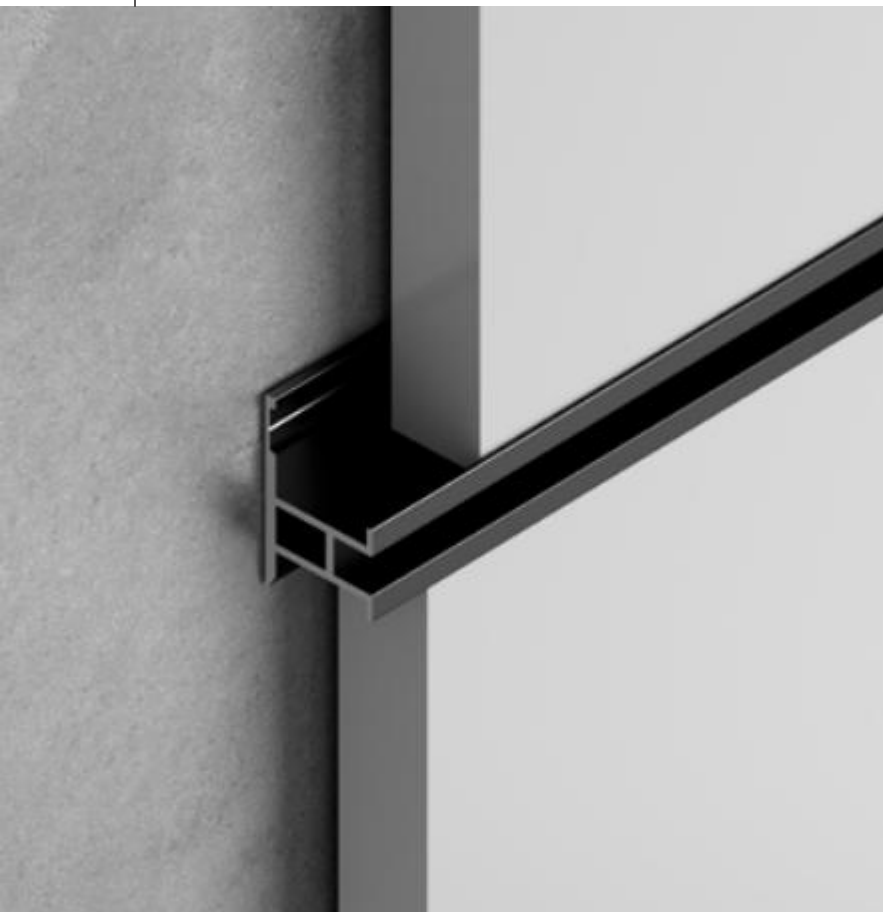
— INVISIBLE DOOR SERIES

Frame material: Dark skin  
Matching: Pure White+Mis Lock

LIGHT LUXURY INNER DOOR

WALL PANEL SERIES

WAISTLINE



LIGHT LUXURY INNER DOOR

SHARP ANGLE

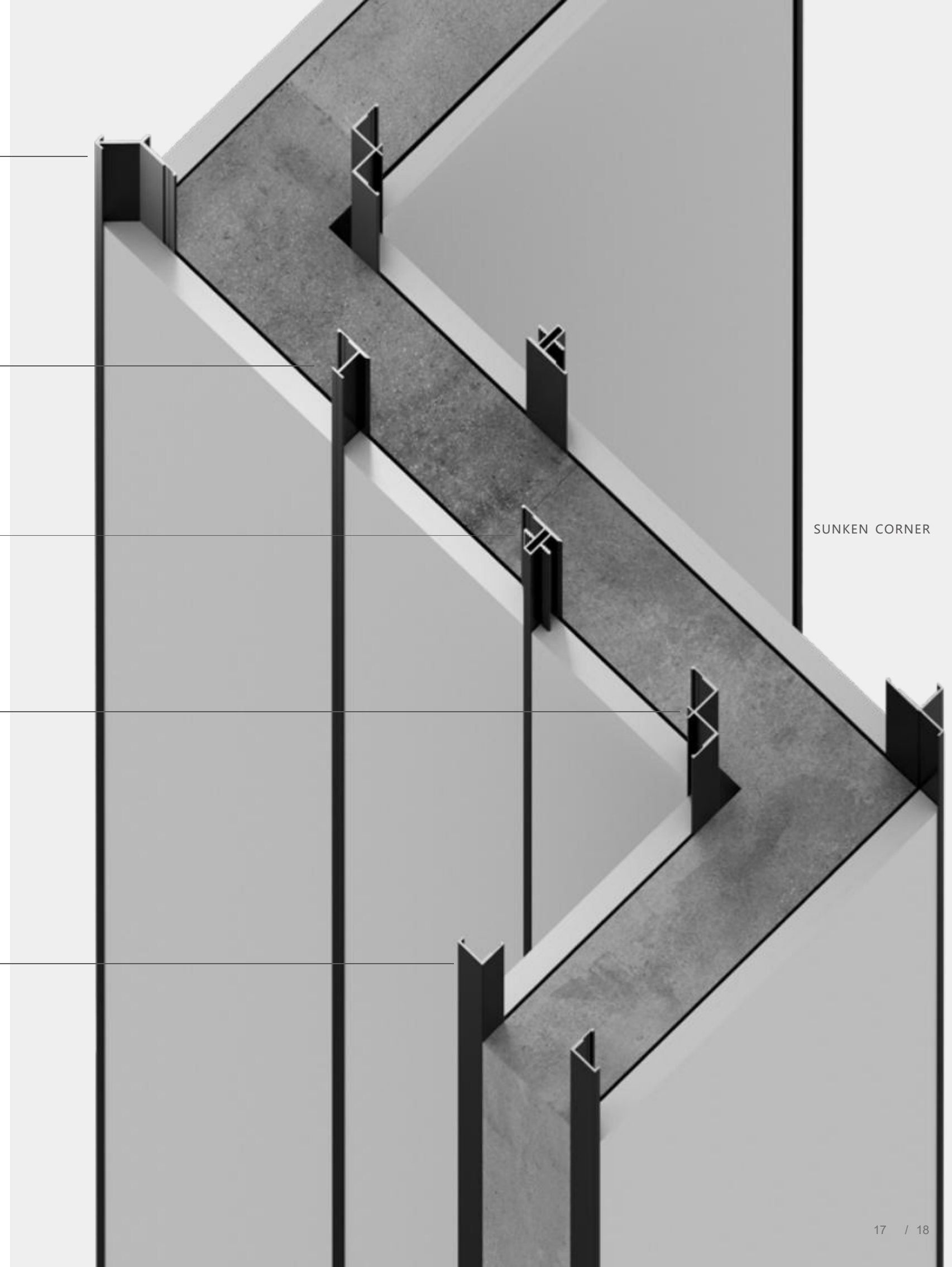
SUB-LINE

FLAT SEAM

INSIDE CORNER

CLOSE

SUNKEN CORNER



45 SYSTEM 9MM ALUMINUM  
WOODEN DOOR

# 45 SERIES

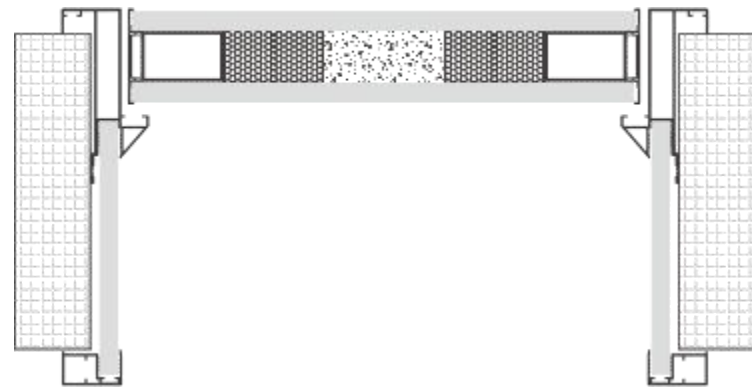


— 45 SYSTEM 9MM ALUMINUM WOODEN DOOR

Frame material: Dark skin  
Matching: 3401+Mislock

LIGHT LUXURY INNER DOOR

Model | 45 System 9mm Aluminum Wooden Door



Product parameters

Door leaf thickness | 45mm  
 Panel thickness | 5/9mm  
 Front width of border | 28mm

Hardware accessories

Lock | Magnetic lock  
 Core | Aluminum honeycomb  
 Hinges | Four hole clear hinge, precision cast steel hinge

Frame color | Skin black, moonlight gray, white, milk tea gray, galaxy gray

Panel material | 9mm particle board

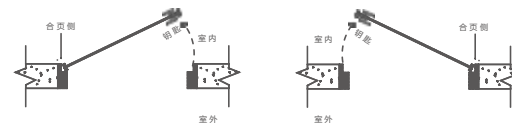
Panel color | Available in full color

Door frame style | 45 integrated main frame/keel+cover plate

Door leaf size | Height size  $1800 \leq H \leq 3000\text{mm}$ , width size  $800 \leq W \leq 1200\text{mm}$

Wall thickness | Integrated door frame within 200mm, wall thickness >200mm with connecting plate

Opening Direction | Schematic Diagram of Opening Direction



Left inner opening

Right inner opening

Door frame color | optional color card



Dark skin

Moonlight Grey

white

Cream Grey

Galactic Grey

— 45 SYSTEM 9MM PANEL ECO-DOOR



— 45 SYSTEM 9MM ALUMINUM WOODEN DOOR

Frame material: Dark skin  
 Supporting: Mist Mud Ash No.1+Mislock



— A MINIMALIST LOCK

Minimalist surface, the door leaf surface is as smooth as a mirror.  
The design is simple and smooth, meeting more personalized needs.



— A MINIMALIST LOCK

The soft and smooth line diagram of the handle is designed ergonomically,  
Lightweight and delicate grip, never sagging, aesthetically pleasing fit, sturdy structure



— 45 SYSTEM 9MM ALUMINUM  
WOODEN DOOR

Frame material: Dark skin  
Supporting: Natural pear wood+Mislock



— 45 SYSTEM 9MM ALUMINUM WOODEN DOOR

Frame material: Dark skin  
Supporting: Smoked wood+Mislock

## High quality

Pursuing quality on the principle of simplicity and creating one's own simplicity  
And a beautiful way of life.



— 45 SYSTEM 9MM ALUMINUM WOODEN DOOR

Frame material: white  
Supporting facilities: Shuxiangtong+Mislock



— 45 SYSTEM 9MM ALUMINUM WOODEN DOOR

Frame material: Moonlight Grey  
Matching: Skin Feeling Noble+Mislock

45 系统外平内开铝木门  
ECO-GATE SERIES

# 45 SERIES

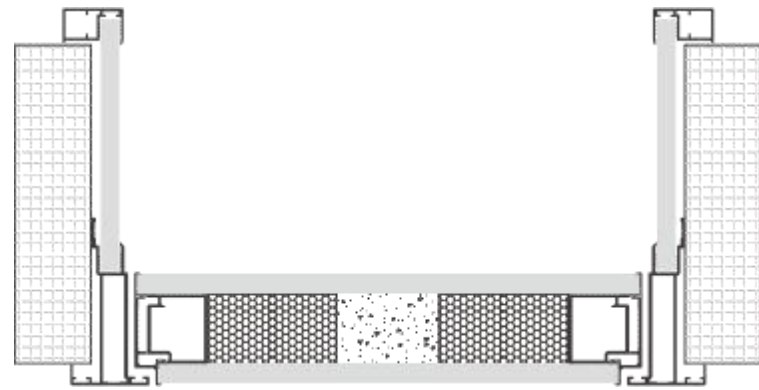


— 45 SYSTEM 9MM ALUMINUM  
WOODEN DOOR

Frame material: Dark skin  
Supporting facilities: Dangui+Mislock

LIGHT LUXURY INNER DOOR

Model | 45 System External Flat Internal Open Aluminum Wooden Door



Product parameters

Door leaf thickness | 45mm  
 Panel thickness | 5/9mm  
 Front width of border | 37mm

Hardware accessories

Lock | Magnetic lock  
 Core | Aluminum honeycomb  
 Hinges | Off axis hinge

Frame color | Skin black, moonlight gray, white, milk tea gray, Milky Way gray

Panel material | 9mm particle board

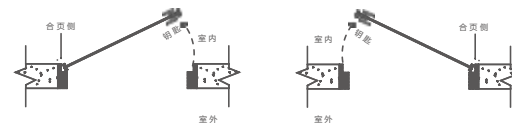
Panel color | Available in full color

Door frame style | 45 integrated main frame/keel+cover plate

Door leaf size | Height size  $1800 \leq H \leq 3000\text{mm}$ , width size  $800 \leq W \leq 1200\text{mm}$

Wall thickness | Integrated door frame within 200mm, wall thickness >200mm with connecting plate

Opening Direction | Schematic Diagram of Opening Direction



Left inner opening

Right inner opening

Door frame color | optional color card



Dark skin

Moonlight Grey

white

Cream Grey

Galactic Grey

— 45 SYSTEM EXTERNAL FLAT INTERNAL OPEN ALUMINUM WOODEN DOOR



45 SYSTEM EXTERNAL FLAT INTERNAL OPEN ALUMINUM WOODEN DOOR

Frame material: Dark skin  
 Supporting facilities: Shuxiangtong+Mislock



— 45 SYSTEM EXTERNAL FLAT INTERNAL OPEN  
ALUMINUM WOODEN DOOR

Frame material: Dark skin  
Matching: Zero degree oak+Mislock

— 45 SYSTEM EXTERNAL FLAT INTERNAL OPEN  
ALUMINUM WOODEN DOOR

Frame material: Dark skin  
Matching: Molan Black Walnut+Mislock



— 45 SYSTEM EXTERNAL FLAT INTERNAL OPEN  
ALUMINUM WOODEN DOOR

Frame material: Dark skin  
Supporting: SR964-3D+Mislock

## High quality

Pursuing quality on the principle of simplicity and creating one's own simplicity  
And a beautiful way of life.



— 45 SYSTEM EXTERNAL FLAT INTERNAL OPEN  
ALUMINUM WOODEN DOOR

Frame material: Dark skin  
Supporting: SR964-1D+Mislock



— 45 SYSTEM EXTERNAL FLAT INTERNAL OPEN  
ALUMINUM WOODEN DOOR

Frame material: Dark skin  
Supporting facilities: Silk Road - Grey+Mislock

45 SYSTEM MAGNETIC SILENT ALUMINUM  
WOODEN DOOR

# 45 SERIES

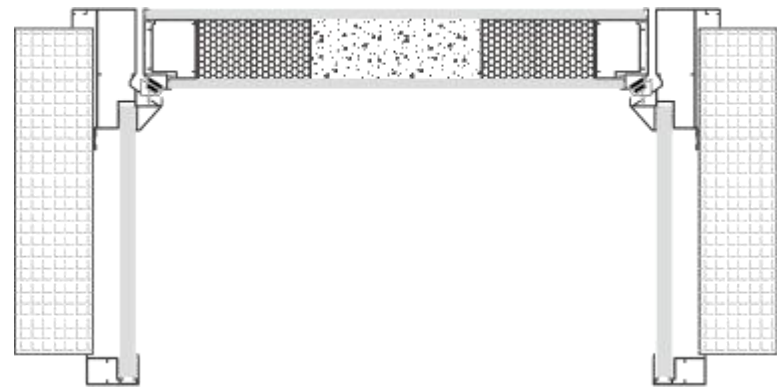


— 45 SYSTEM EXTERNAL FLAT INTERNAL OPEN  
ALUMINUM WOODEN DOOR

Frame material: Dark skin  
Supporting: Mist Mud Ash No.1+Mislock

LIGHT LUXURY INNER DOOR

Model | 45 System Magnetic Silent Aluminum Wooden Door



Product parameters

Door leaf thickness | 45mm

Panel thickness | 5/9mm

Front width of border | 28mm

Hardware accessories

Lock | Magnetic lock

Core | Aluminum honeycomb

Hinges | Heaven and earth hinges, four hole clear hinges, precision cast steel hinges

Frame color | Skin black, moonlight gray, white

Panel material | 9mm particle board

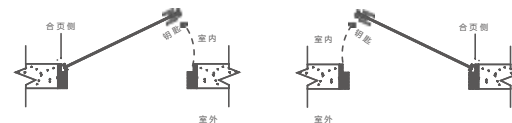
Panel color | Available in full color

Door frame style | 45 integrated main frame/keel+cover plate

Door leaf size | Height size  $1800 \leq H \leq 3000\text{mm}$ , width size  $800 \leq W \leq 1200\text{mm}$

Wall thickness | Integrated door frame within 200mm, wall thickness >200mm with connecting plate

Opening Direction | Schematic Diagram of Opening Direction



Left inner opening

Right inner opening

Door frame color | optional color card



Dark skin

Moonlight Grey

white



45° blique

45°slanted door leaf combined with magnetic strip,  
Stronger sealing performance and quieter noise!

BREAKING THROUGH TRADITION, MAGNETIC ATTRACTION FOR SILENT OPERATION



— 45 SYSTEM MAGNETIC SILENT ALUMINUM WOODEN DOOR

Frame material: Dark skin  
Matching: Skin Feeling Noble+Mislock

LIGHT LUXURY INNER DOOR

# SILENT MAGNETIC DOOR

Door and door frame 45° tripartite elastic magnetic silence technology more fit, Sound insulation and collision prevention.

45° MAGNETIC SILENT STRIP

45 ° MAGNETIC SILENT STRIP





— 45 SYSTEM MAGNETIC SILENT ALUMINUM WOODEN DOOR

Frame material: Dark skin  
 Matching: 3401+Mislock

## High quality

Pursuing quality on the principle of simplicity and creating one's own simplicity  
 And a beautiful way of life.



— 45 SYSTEM MAGNETIC SILENT ALUMINUM WOODEN DOOR

Frame material: Dark skin  
 Matching: Zero degree oak+Mislock



— 45 SYSTEM MAGNETIC SILENT ALUMINUM WOODEN DOOR

Frame material: Dark skin  
 Supporting: Smoked wood+Mislock

# 50 SERIES



— 50 SYSTEM EXTERNAL FLAT INTERNAL OPEN  
ALUMINUM WOODEN DOOR

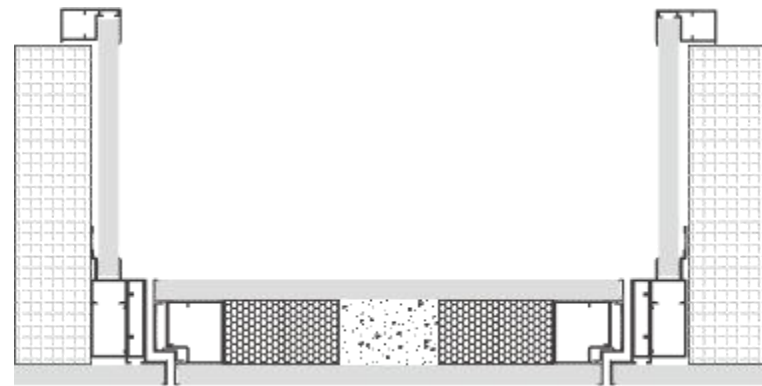
Frame material: Dark skin  
Supporting: Tianshan oak+Mislock



— 50 SYSTEM EXTERNAL FLAT INTERNAL OPEN  
ALUMINUM WOODEN DOOR

Frame material: Dark skin  
Supporting facilities: Dangui+Mislock

Model | 50 new system with 9mm aluminum wooden door with flat exterior and open interior



Product parameters

Door leaf thickness | 50mm  
 Panel thickness | 5/9mm  
 Front width of border | 3mm

Hardware accessories

Lock | Magnetic lock  
 Core | Aluminum honeycomb  
 Hinges | 3D hinges

Frame color | Skin black, moonlight gray, white

Panel material | 9mm particle board

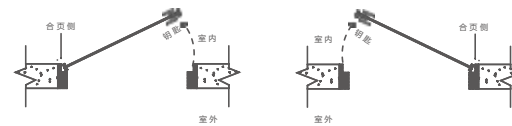
Panel color | Available in full color

Door frame style | 50 integrated main frame/keel+cover plate

Door leaf size | Height size  $1800 \leq H \leq 3000\text{mm}$ , width size  $800 \leq W \leq 1200\text{mm}$

Wall thickness | Integrated door frame within 200mm, wall thickness >200mm with connecting plate

Opening Direction | Schematic Diagram of Opening Direction



Left inner opening

Right inner opening

Door frame color | optional color card



Dark skin

Moonlight Grey

white

— 50 NEW SYSTEM WITH 9MM ALUMINUM WOODEN DOOR WITH FLAT EXTERIOR AND OPEN INTERIOR



— 50 SYSTEM EXTERNAL FLAT INTERNAL OPEN ALUMINUM WOODEN DOOR

Frame material: Dark skin  
 Matching: Molan Black Walnut+Mislock



— 50 SYSTEM EXTERNAL FLAT INTERNAL OPEN  
ALUMINUM WOODEN DOOR

Frame material: Dark skin  
Matching: Iced Tea Ash+Mislock

— 50 SYSTEM EXTERNAL FLAT INTERNAL OPEN  
ALUMINUM WOODEN DOOR

Frame material: Dark skin  
Supporting: Metal film - Graphite gray+Mislock



— 50 SYSTEM EXTERNAL FLAT INTERNAL OPEN  
ALUMINUM WOODEN DOOR

Frame material: Dark skin  
Matching: Skin feel banyan wood+Mislock

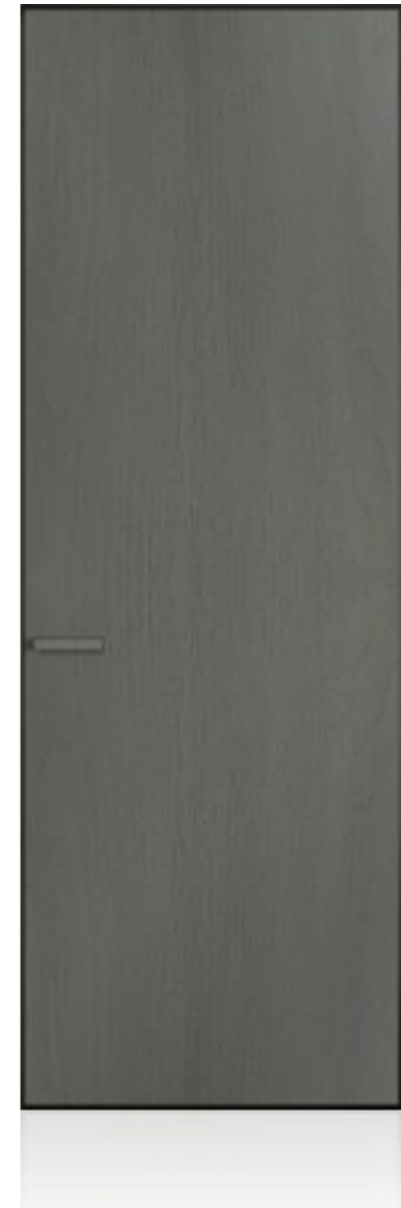
## High quality

Pursuing quality on the principle of simplicity and creating one's own simplicity  
And a beautiful way of life.



— 50 SYSTEM EXTERNAL FLAT INTERNAL OPEN  
ALUMINUM WOODEN DOOR

Frame material: Dark skin  
Matching: Skin Feeling Noble+Mislock



— 50 SYSTEM EXTERNAL FLAT INTERNAL OPEN  
ALUMINUM WOODEN DOOR

Frame material: Dark skin  
Supporting: Mist Mud Ash No.1+Mislock

50 NEW SYSTEM WITH 9MM ALUMINUM  
WOODEN DOOR WITH FLAT OUTER OPENING

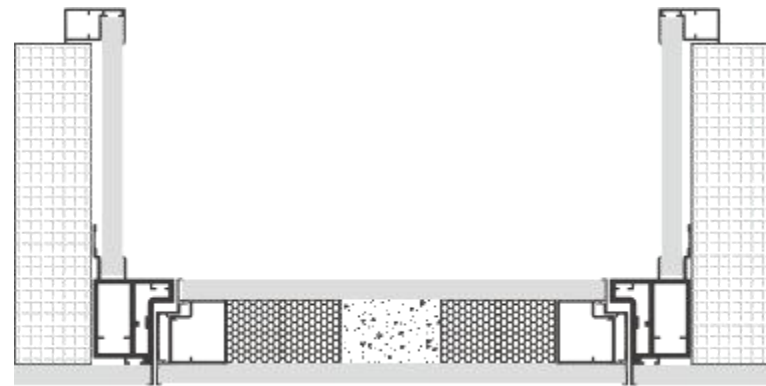
# 50 SERIES



— 50 SYSTEM EXTERNAL FLAT INTERNAL OPEN  
ALUMINUM WOODEN DOOR

Frame material: Dark skin  
Matching: Zero degree oak+minimalist lock

Model | 50 new system with 9mm aluminum wooden door with flat outer opening



Product parameters

Door leaf thickness | 50mm  
 Panel thickness | 5/9mm  
 Front width of border | 3mm

Hardware accessories

Lock | Magnetic lock  
 Core | Aluminum honeycomb  
 Hinges | 3D hinges

Frame color | Skin black, moonlight gray, white

Panel material | 9mm particle board

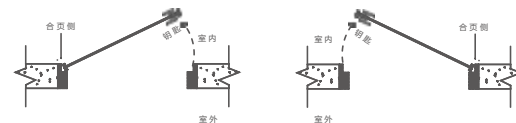
Panel color | Available in full color

Door frame style | 50 integrated main frame/keel+cover plate

Door leaf size | Height size  $1800 \leq H \leq 3000\text{mm}$ , width size  $800 \leq W \leq 1200\text{mm}$

Wall thickness | Integrated door frame within 200mm, wall thickness >200mm with connecting plate

Opening Direction | Schematic Diagram of Opening Direction



Left inner opening

Right inner opening

Door frame color | optional color card



Dark skin

Moonlight Grey

white

— 50 NEW SYSTEM WITH 9MM ALUMINUM WOODEN DOOR WITH FLAT EXTERIOR AND OPEN INTERIOR



— 50 SYSTEM EXTERNAL FLAT OPEN ALUMINUM WOODEN DOOR

Frame material: Dark skin  
 Supporting: Bookish Kirin+Extremely Simple Lock



— 50 SYSTEM EXTERNAL FLAT OPEN  
ALUMINUM WOODEN DOOR

Frame material: Dark skin  
Supporting: Smoked wood+minimalist lock

## High quality

Pursuing quality on the principle of simplicity and creating one's own simplicity  
And a beautiful way of life.



— 50 SYSTEM EXTERNAL FLAT OPEN  
ALUMINUM WOODEN DOOR

Frame material: Dark skin  
Supporting: Natural Pear Wood+Extremely Simple Lock



— 50 SYSTEM EXTERNAL FLAT OPEN  
ALUMINUM WOODEN DOOR

Frame material: Dark skin  
Supporting: 3401+Extremely Simple Lock

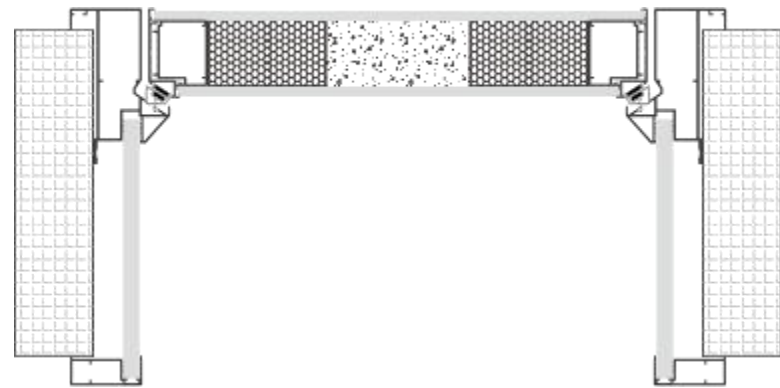
# 50 SERIES



50 SYSTEM MAGNETIC ALUMINUM —  
WOODEN DOOR

Frame material: Dark skin  
Matching: Zero degree oak+minimalist lock

Model | 50 System (Magnetic) Aluminum Wooden Door



Product parameters

Door leaf thickness | 50mm  
Panel thickness | 5/9mm  
Front width of border | 40mm

Hardware accessories

Lock | Magnetic lock  
Core | Aluminum honeycomb  
Hinges | 3D hinges

Frame color | Skin black, moonlight gray, white

Panel material | 9mm particle board

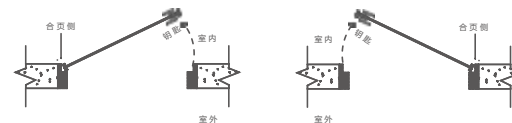
Panel color | Available in full color

Door frame style | 50 integrated main frame/keel+cover plate

Door leaf size | Height size  $1800 \leq H \leq 3000\text{mm}$ , width size  $800 \leq W \leq 1200\text{mm}$

Wall thickness | Integrated door frame within 200mm, wall thickness >200mm with connecting plate

Opening Direction | Schematic Diagram of Opening Direction



Left inner opening

Right inner opening

Door frame color | optional color card



Dark skin

Moonlight Grey

white

— 50 SYSTEM MAGNETIC ALUMINUM WOODEN DOOR

LIGHT LUXURY INNER DOOR



— 50 SYSTEM MAGNETIC ALUMINUM WOODEN DOOR

Frame material: Dark skin

Supporting: Silk Road - White+Ultra Simple Lock

59 / 60



— 50 SYSTEM MAGNETIC ALUMINUM WOODEN DOOR

Frame material: Dark skin  
Supporting facilities: Shuxiangtong+Mislock

## High quality

Pursuing quality on the principle of simplicity and creating one's own simplicity  
And a beautiful way of life.



— 50 SYSTEM MAGNETIC ALUMINUM WOODEN DOOR

Frame material: Dark skin  
Matching: Van Gogh Impressions+Mislock



— 50 SYSTEM MAGNETIC ALUMINUM WOODEN DOOR

Frame material: Dark skin  
Supporting facilities: Dangui+Mislock

57 SYSTEM EXTERNAL FLAT INTERNAL  
OPEN ALUMINUM WOODEN DOOR

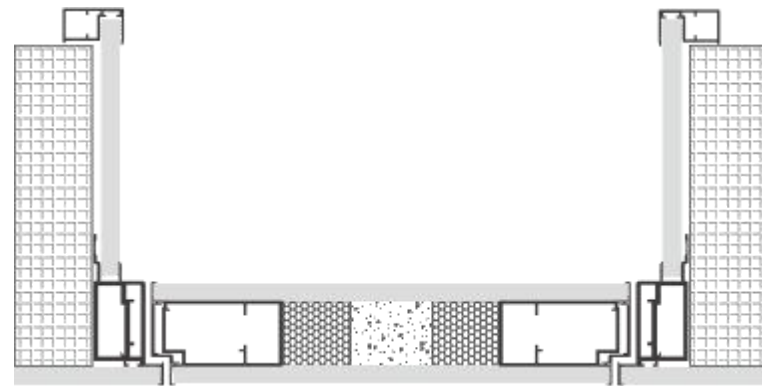
# 57 SERIES



— 57 SYSTEM EXTERNAL FLAT INTERNAL OPEN  
ALUMINUM WOODEN DOOR

Frame material: Dark skin  
Supporting: EB metal film graphite gray+Mislock

Model | 57 System External Flat Internal Open Aluminum Wooden Door



Product parameters

Door leaf thickness | 57mm  
 Panel thickness | 5/9mm  
 Front width of border | 3mm

Hardware accessories

Lock | Magnetic lock  
 Core | Aluminum honeycomb  
 Hinges | Zinc alloy hinges, 3D hinges

Frame color | Skin black, moonlight gray, white

Panel material | 9mm particle board

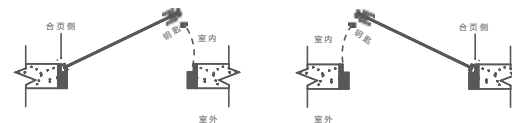
Panel color | Available in full color

Door frame style | 57 integrated main frame/keel+cover plate

Door leaf size | Height size  $1800 \leq H \leq 3000\text{mm}$ , width size  $800 \leq W \leq 1200\text{mm}$

Wall thickness | Integrated door frame within 200mm, wall thickness >200mm with connecting plate

Opening Direction | Schematic Diagram of Opening Direction



Left inner opening

Right inner opening

Door frame color | optional color card



Dark skin    Moonlight Grey    white

— 57 SYSTEM EXTERNAL FLAT INTERNAL OPEN ALUMINUM WOODEN DOOR



— 57 SYSTEM EXTERNAL FLAT INTERNAL OPEN ALUMINUM WOODEN DOOR

Frame material: Dark skin  
 Supporting facilities: Shuxiangtong+Mislock



— 57 SYSTEM EXTERNAL FLAT INTERNAL OPEN  
ALUMINUM WOODEN DOOR

Frame material: Dark skin  
Matching: Van Gogh Impressions+Mixlock

## High quality

Pursuing quality on the principle of simplicity and creating one's own simplicity  
And a beautiful way of life.



— 57 SYSTEM EXTERNAL FLAT INTERNAL OPEN  
ALUMINUM WOODEN DOOR

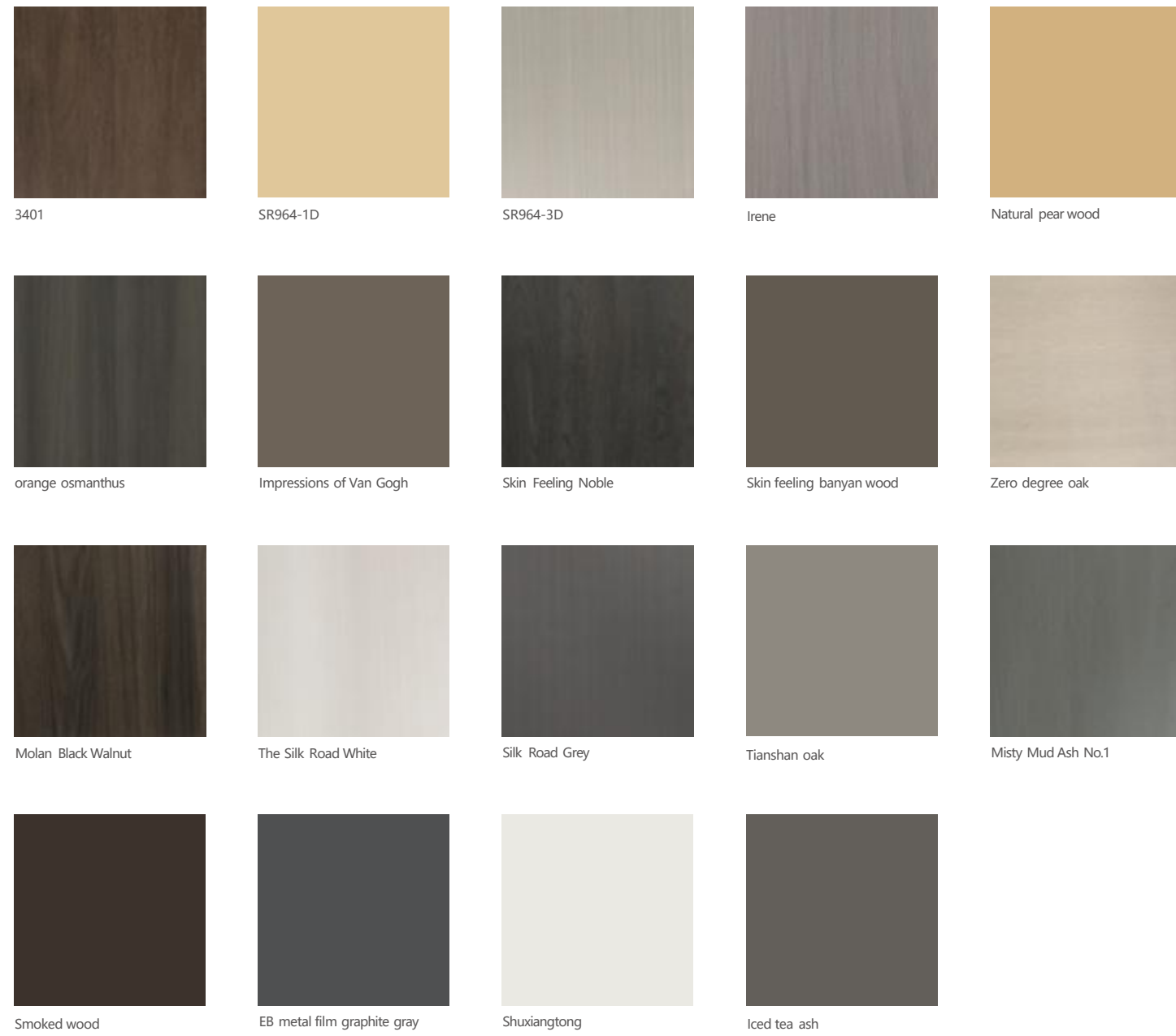
Frame material: Dark skin  
Supporting facilities: Dangui+Mislock



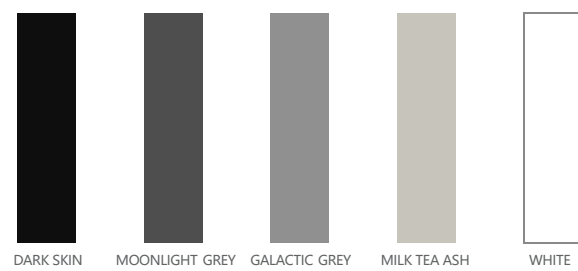
— 57 SYSTEM EXTERNAL FLAT INTERNAL OPEN  
ALUMINUM WOODEN DOOR

Frame material: Dark skin  
Supporting: Irene+Mislock

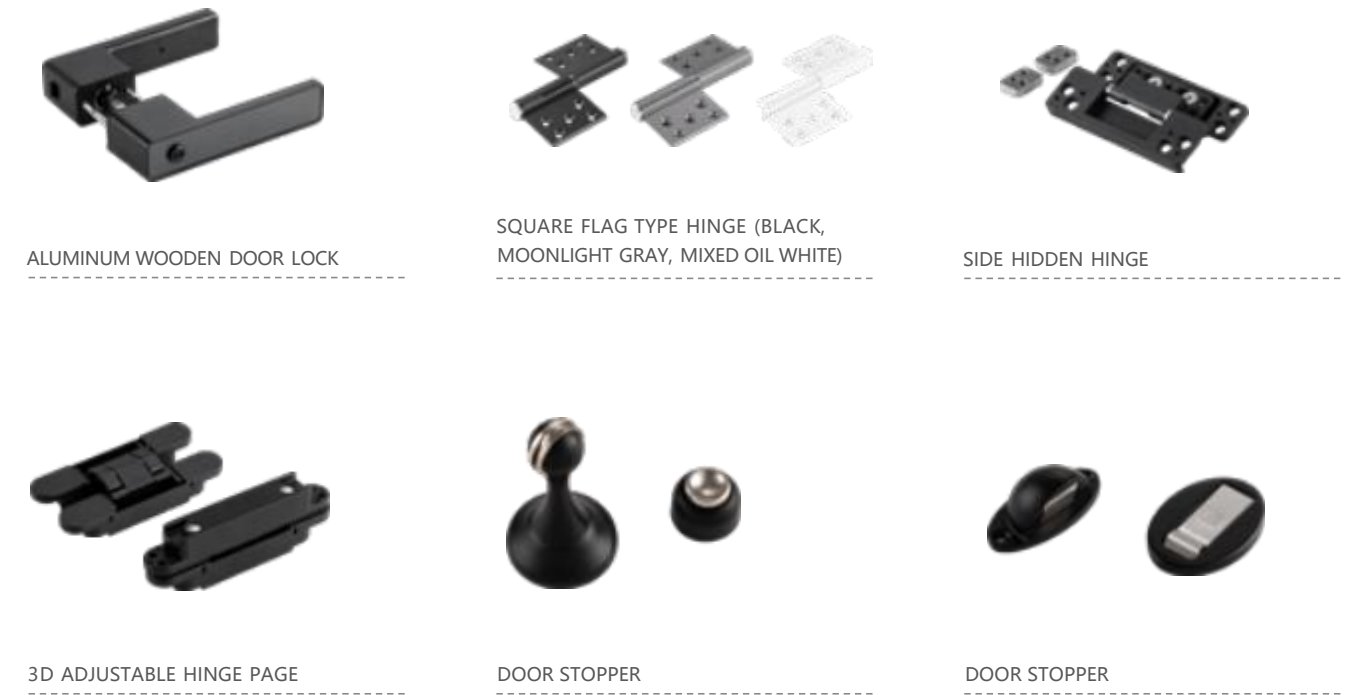
DECORATIVE COLOR



ALUMINUM PRODUCT



ALUMINUM WOODEN DOOR ACCESSORIES



OPENING METHOD

